

TECHNICAL DATA SHEET - HYDRA® FORM

HyDra®Form is a non-self-supporting disposable formwork system that is easy to handle and install.

HyDra®Form consists of a steel mesh coated by a strong and flexible foil. The steel mesh consists of 4mm longitudinal bars (CC150mm) og 3mm transversal bars (CC75mm).

The steel mesh is produced of 100 % recycled steel. The foil (LLDPE/LDPE) is partially produced from recycled plastic (40 %).

HyDra®Form is a simple and inexpensive solution that can replace traditional formwork systems. The formwork weighs just 1,64 kg/m² of which the steel makes up the 1,6 kg/m².

HyDra®Form is quick and easy to install and requires no crane or other machines.



ADVANTAGES

- ✓ Cost-effective
- ✓ Easy and quick to install
- ✓ Tailored solutions
- ✓ Easy to customize to the building site



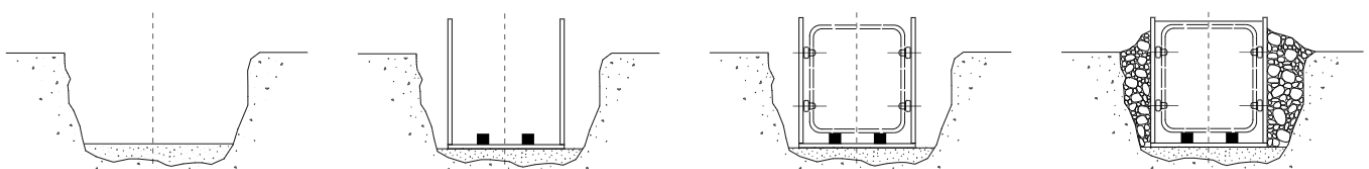
The pictures show Hydra®Form in use



INSTALLATION

- HyDra®Form is easy and quick to adapt on the construction site. When adjusting, avoid cutting the foil, and always keep one or more rods to maintain satisfactory stability of the mold.
- Overlaps are carried out with a minimum of 150 mm. It is recommended that the sections are secured with tie wire on every other horizontal rod.
- When casting, a maximum drop height of 300 mm is recommended.
- Bending and adjustments must be done on a levelled surface and use a board or the like, to ensure straight edges.

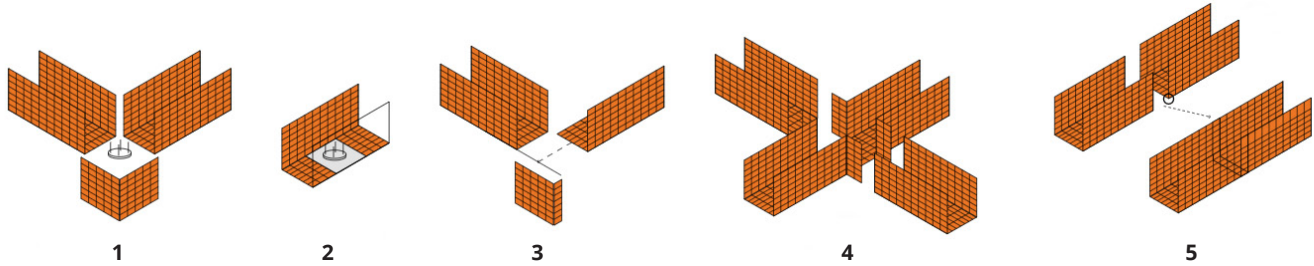
EXAMPLES OF HYDRA®FORM INSTALLATION BEND INTO A U-PROFILE



- Dig the foundation trench and lay out any base layer. Ensure a flat and stable surface.
- Place the HyDra®Form in the foundation trench and lay out spacers at the bottom.
- Install the reinforcement basket with the corresponding spacers.
- Backfill and/or brace HyDra®Form before casting. Max permissible overhang is 50 mm.

Note: We reserve the right to make printing errors. The current version of data is always available at www.haucon.dk or can be requested by contacting our internal sales department. The current revision number is in the top left corner.

EXAMPLE OF ASSEMBLY DETAILS FOR HYDRA®FORM BENT AS A U-PROFILE



1. Pile foundation with external corner
2. Pile head
3. External corner
4. Cross
5. Overlap/joint

PACKAGING AND STORAGE

HyDra®Form is produced in whole sheets of 120x240cm, but can be ordered cut and bent to size for the individual project.

Please contact our office at phone number **+45 8622 9393** for further information.

PRECAUTIONS

Always control that the HyDra®Form is installed and braced correctly before casting.

SAFETY DATASHEET

Safety datasheet is not required for this product.

CE-MARKING

HyDra®Form is not subject to a harmonized standard and therefore does not need to be CE marked